

Public Meeting 1

July 23, 2020



- *Please note this presentation is being recorded.*
- *During the presentation you may type questions in the Q&A box. Questions will be answered during the discussion segment at the end of the presentation.*
- *If you are listening by phone we ask that you keep your phone muted – we will provide instructions on how to ask questions during the discussion session.*



Project Consultant

Simone Collins Landscape Architecture - 610.239.7601

Pankaj Jobanputra, AICP – pjobanputra@simonecollins.com

Joseph Wallace, ASLA – jwallace@simonecollins.com

William Collins, RLA – wcollins@simonecollins.com



Citizens Advisory Committee

Reggie Cheong-Leen – Milford Planning Commission
Laurie DiGeso – Milford Borough Secretary
Maureen Dooley – Pike County Historic Trust
Granger Greenbaum – Milford Planning Commission
Janice Halsted – Milford Planning Commission
Doug Manion – CEO, Kleo Pharmaceuticals
Susanne Smith – Milford Planning Commission
Brian Snyder – Pike County Planning Commission
Sean Strub – Milford Borough Mayor
Barbara Tarquinio – Milford Planning Commission
Frank Tarquinio – Milford Borough Council President
Luke Turano – Milford Borough Council
Adriane Wendell – Milford Borough Council



Agenda

1. Team Introductions
2. Scope
3. Schedule
4. Components of Comprehensive Plan
5. Site Reconnaissance - June 12, 2020
6. Questions to Consider
7. Public Opinion Survey
8. Interactive Brainstorming
9. Next Steps
10. Discussion



Drone Imagery Courtesy of Pike County

SC Graphics & Report — communicate ideas; and serve as funding “sales” tools

Lehman Township Comprehensive Plan Lehman Township Open Space Plan

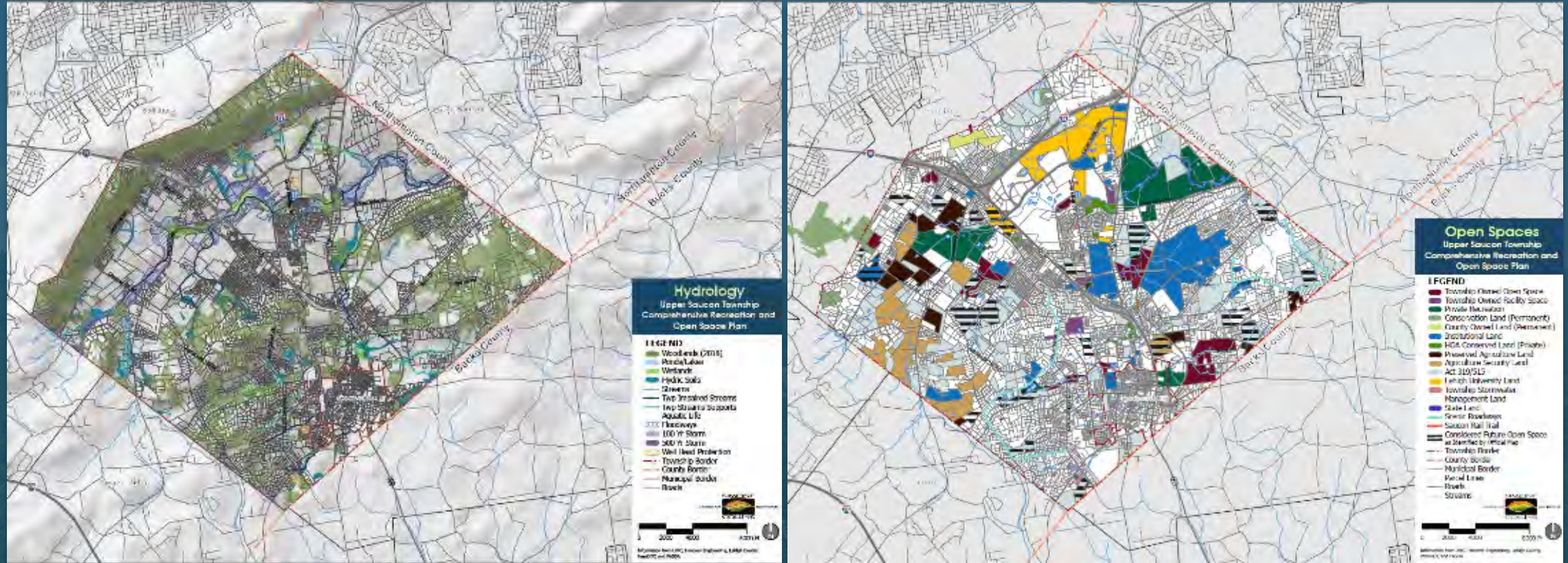


Project Vision

This Update to the Lehman Township Comprehensive Plan envisions Lehman Township as a **vibrant and thriving** community with a **prosperous** future based on its amenities, services, places of employment, respect for its cultural heritage, scenic beauty and quality of life for all residents.



Upper Saucon Township Comprehensive Parks, Recreation and Open Space Plan

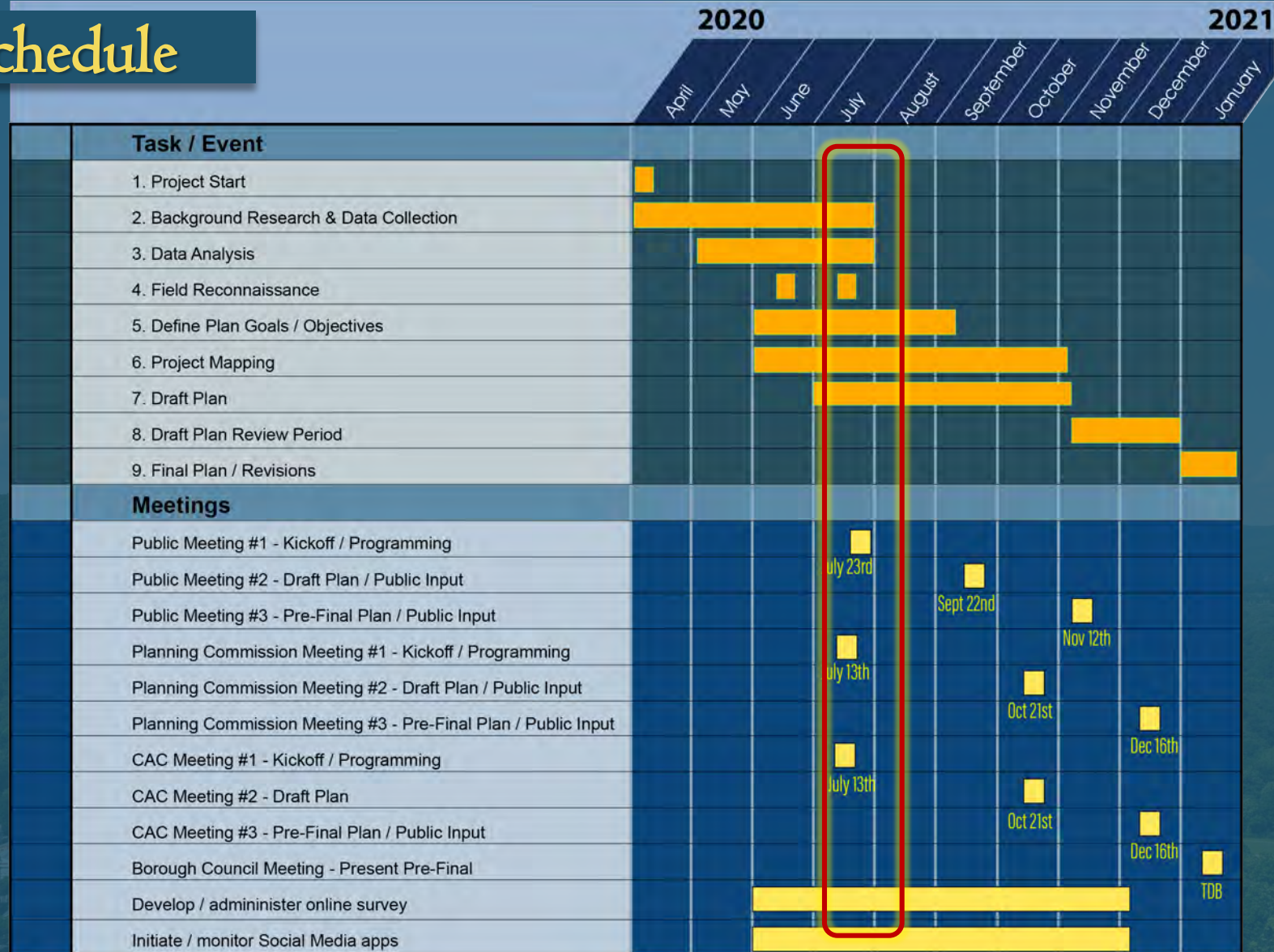


Project Scope

1. Collect and Review Data
2. Conduct Field Reconnaissance
3. Develop / Administer On-Line Survey
4. Initiate / Monitor Social Media Strategy
5. Define Plan Goals / Objectives
6. Design Project Mapping
7. Draft Plan
8. Final Plan
9. Meetings & Stakeholder Involvement
 1. Citizens Advisory Committee (3)
 2. Planning Commission Meetings (3)
 3. Public Meetings (3)
 4. Borough Council Meeting (1)
 5. Online Public Opinion Survey (Open July – December, 2020)
 6. Key Stakeholder Interviews (Up to 6)



Project Schedule



Components of a Comprehensive Plan

Planning Context

- Goals and Objectives
- Demographics
- Existing Conditions & Analysis
- Compatibility with Surrounding Municipal Plans

Recommendations

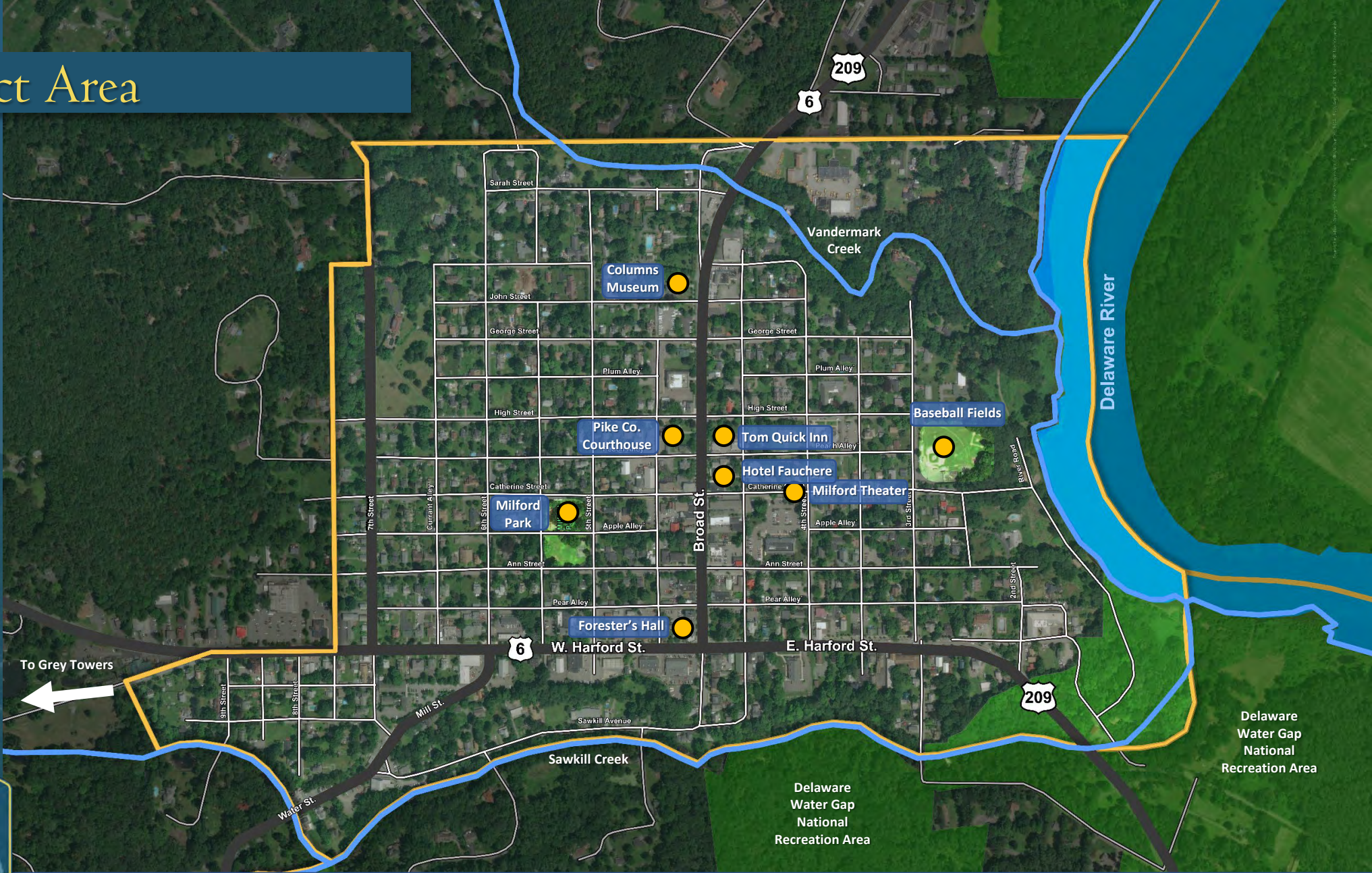
- Future Land Use
- Housing Plan
- Transportation Plan
- Community Facilities and Utilities Plan
- Economic Development Plan
- Protection of Natural and Historic Resources
- Open Space & Recreation
- Arts and Culture

Implementation Strategy

- Implementation Priorities
- Action Strategy (short/long-term)
- Potential Funding Sources



Project Area



Site Reconnaissance – June 12, 2020



State Routes / Arteries – Broad & Harford Streets

Transportation

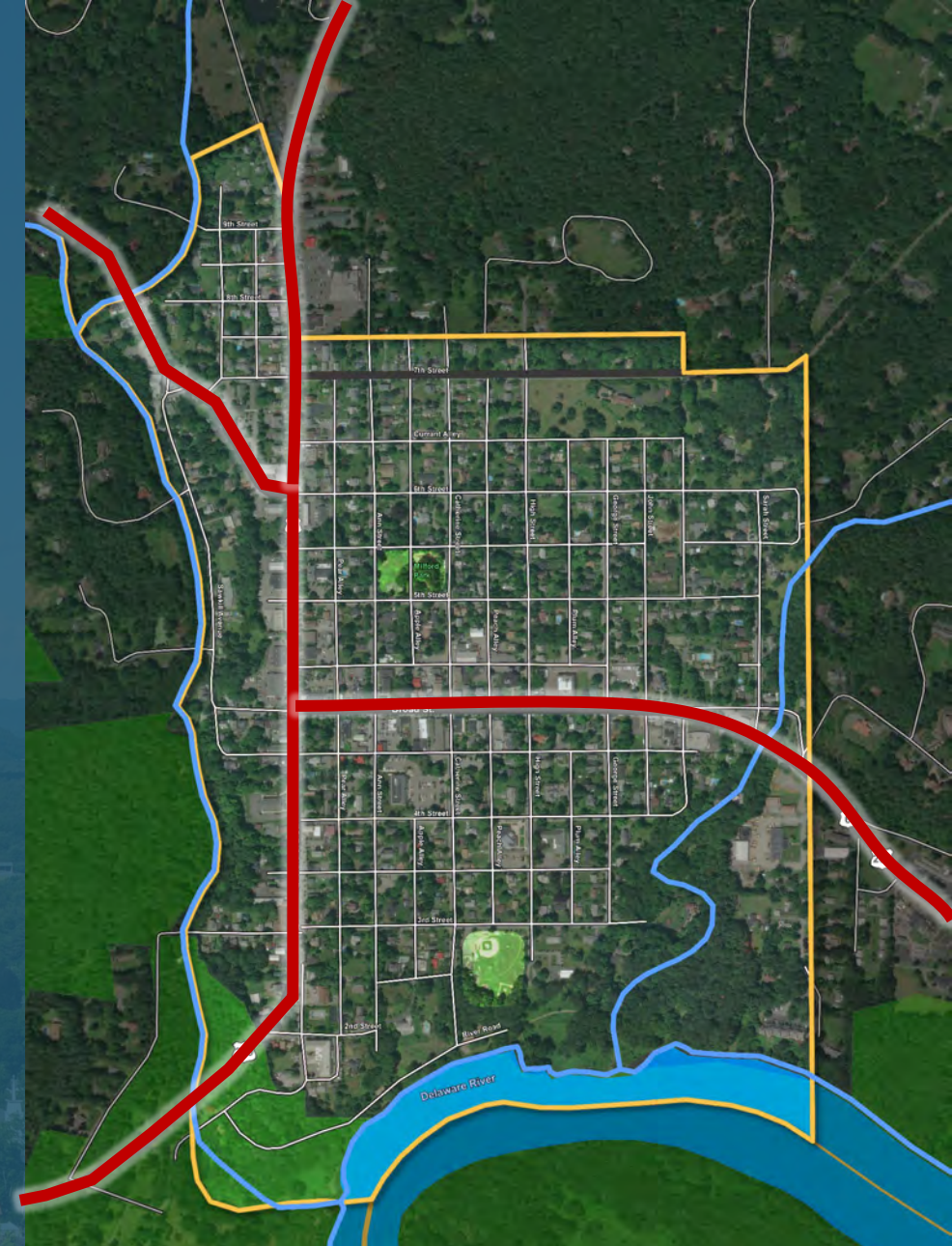
- What does the overall Borough road system need?
- How can pedestrian & bicycle safety be improved?
- Where can additional public parking be implemented?



Broad St.



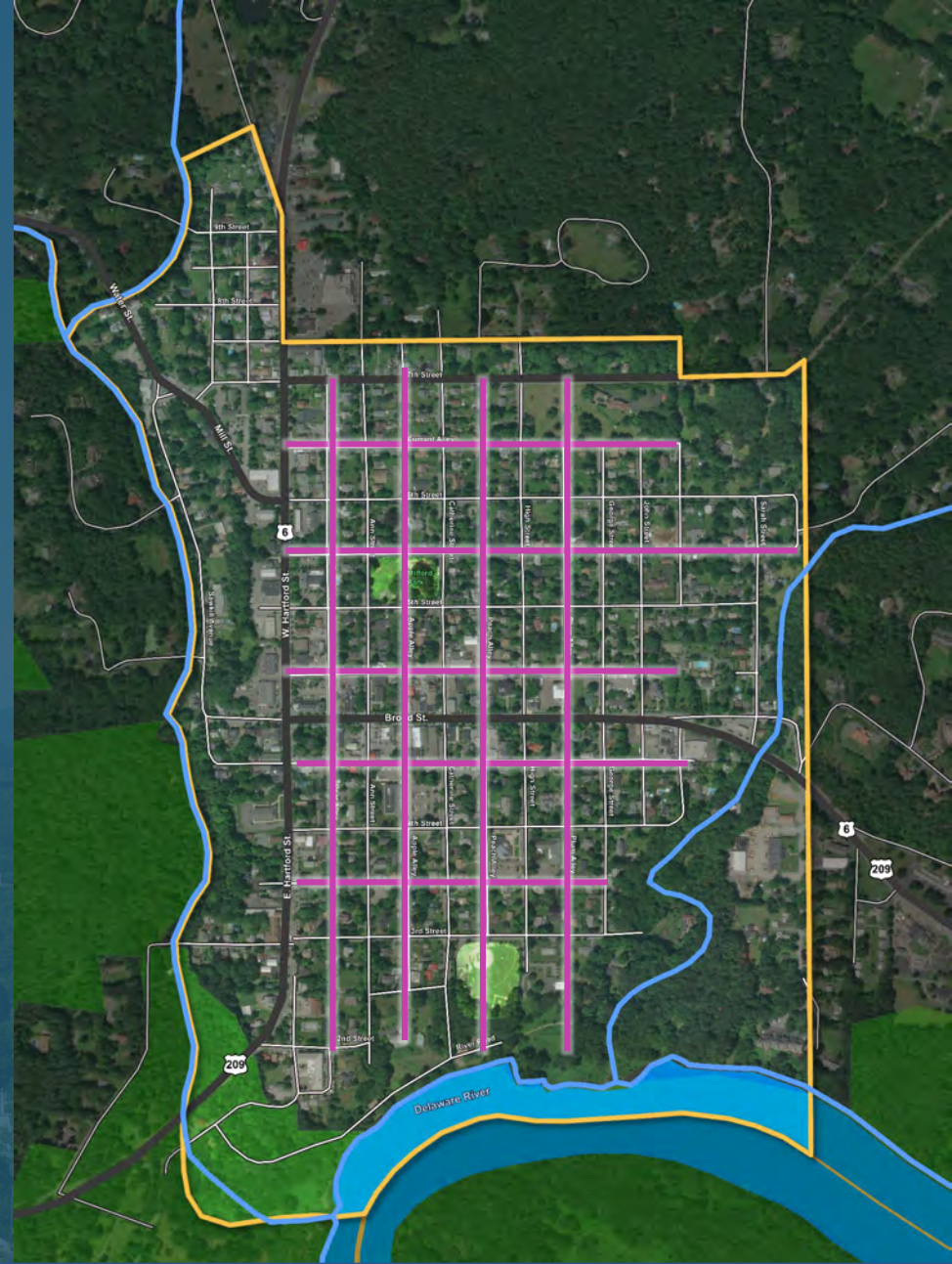
Harford St. (5 p.m. traffic)



Residential Alleys

Transportation / Economic Development

- How can alleys be 'activated' for multi-modal use and economic development?



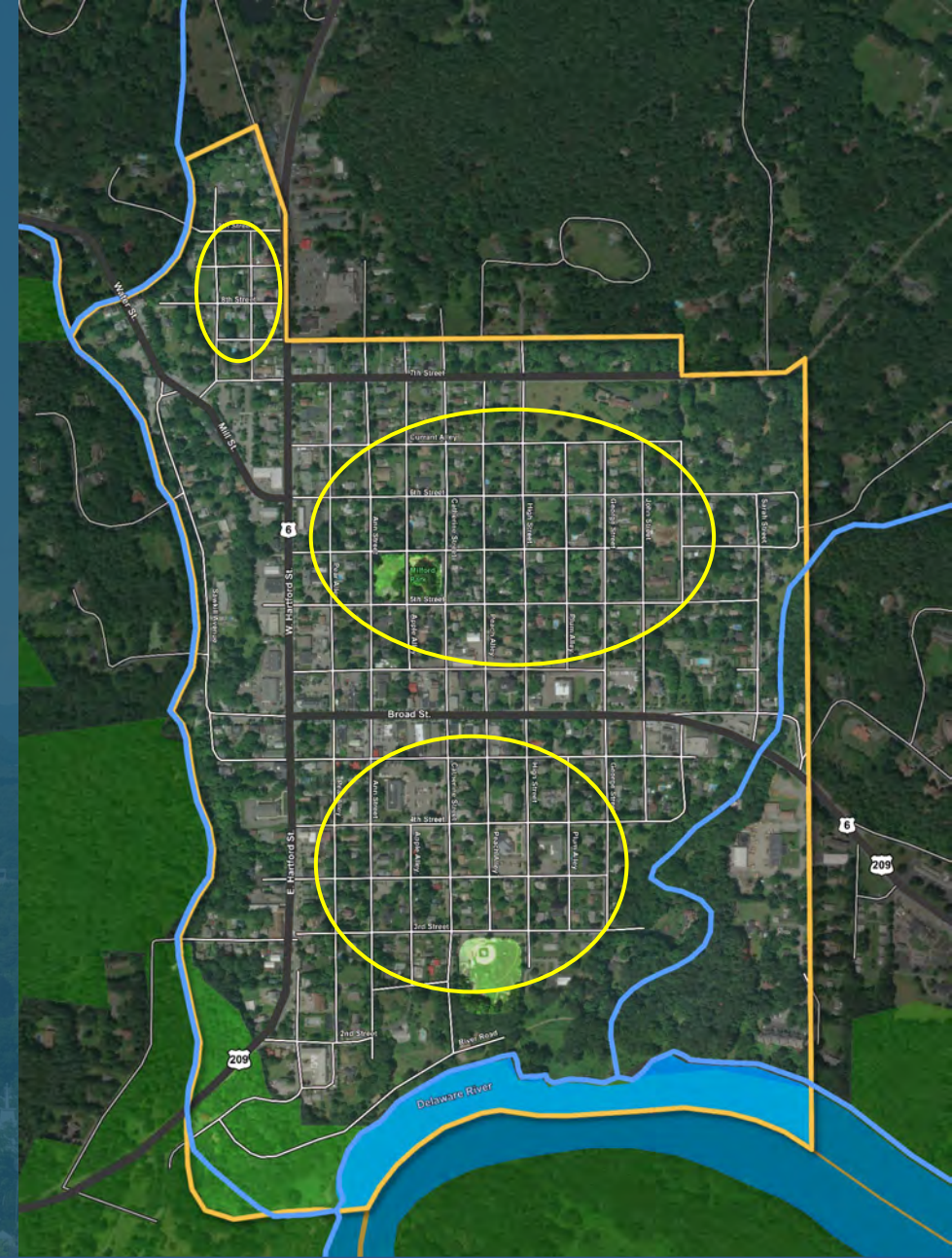
Residential Neighborhoods

Housing

- Does the Borough seek higher residential density?
- What does conservation design mean going forward?

Land Use

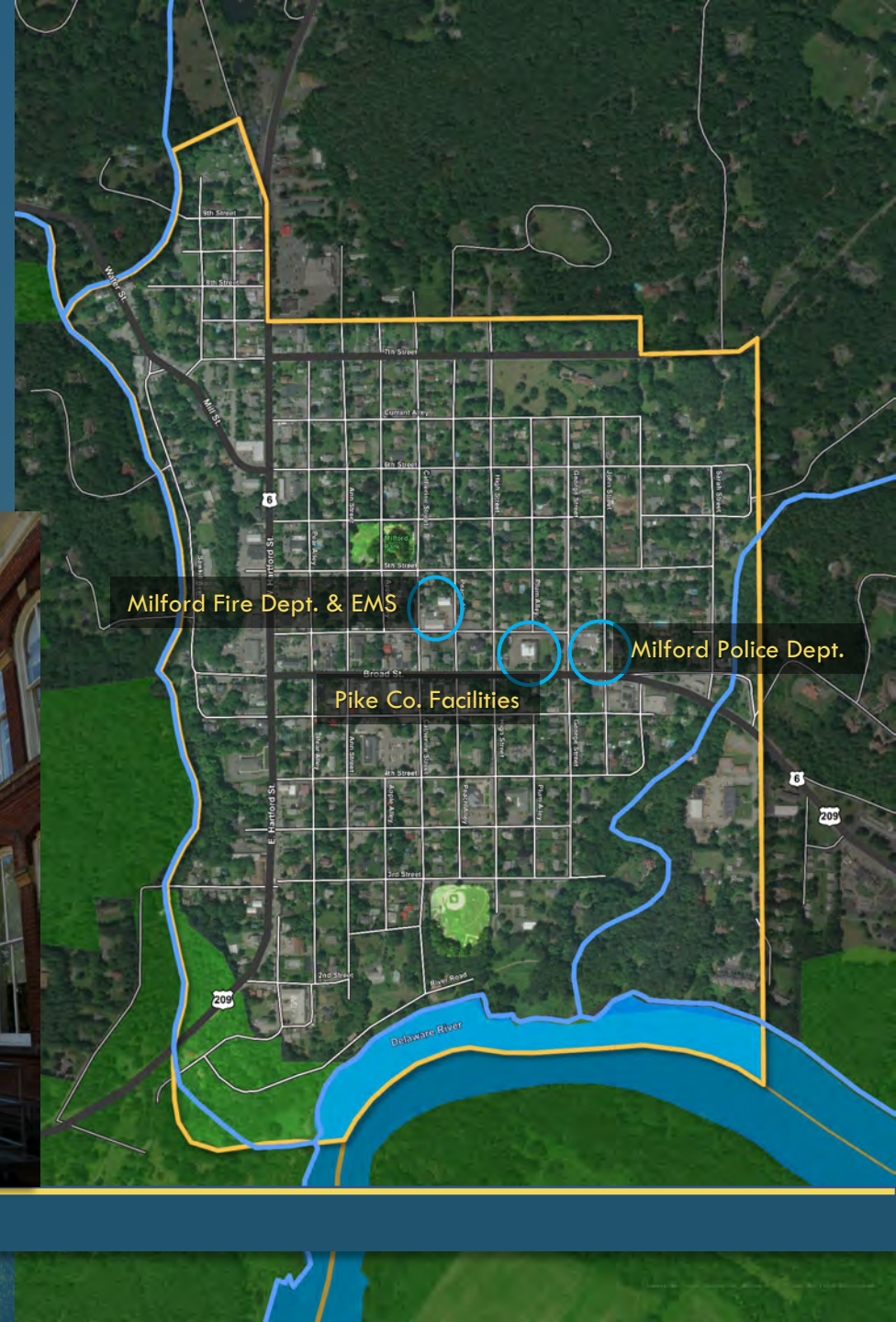
- What modifications to current zoning would be appropriate?
- Where are the buildable lots within the Borough?



Municipal & County Facilities

Community Facilities

- Does an EMS Municipal Authority (and Fire Authority) for the Borough and surrounding municipalities make sense?
- What are some ways to engage new volunteers for Fire/EMS?
- What can be done / what partnerships can be made to increase access to medical services & facilities?



Downtown Businesses

Land Use / Economic Development

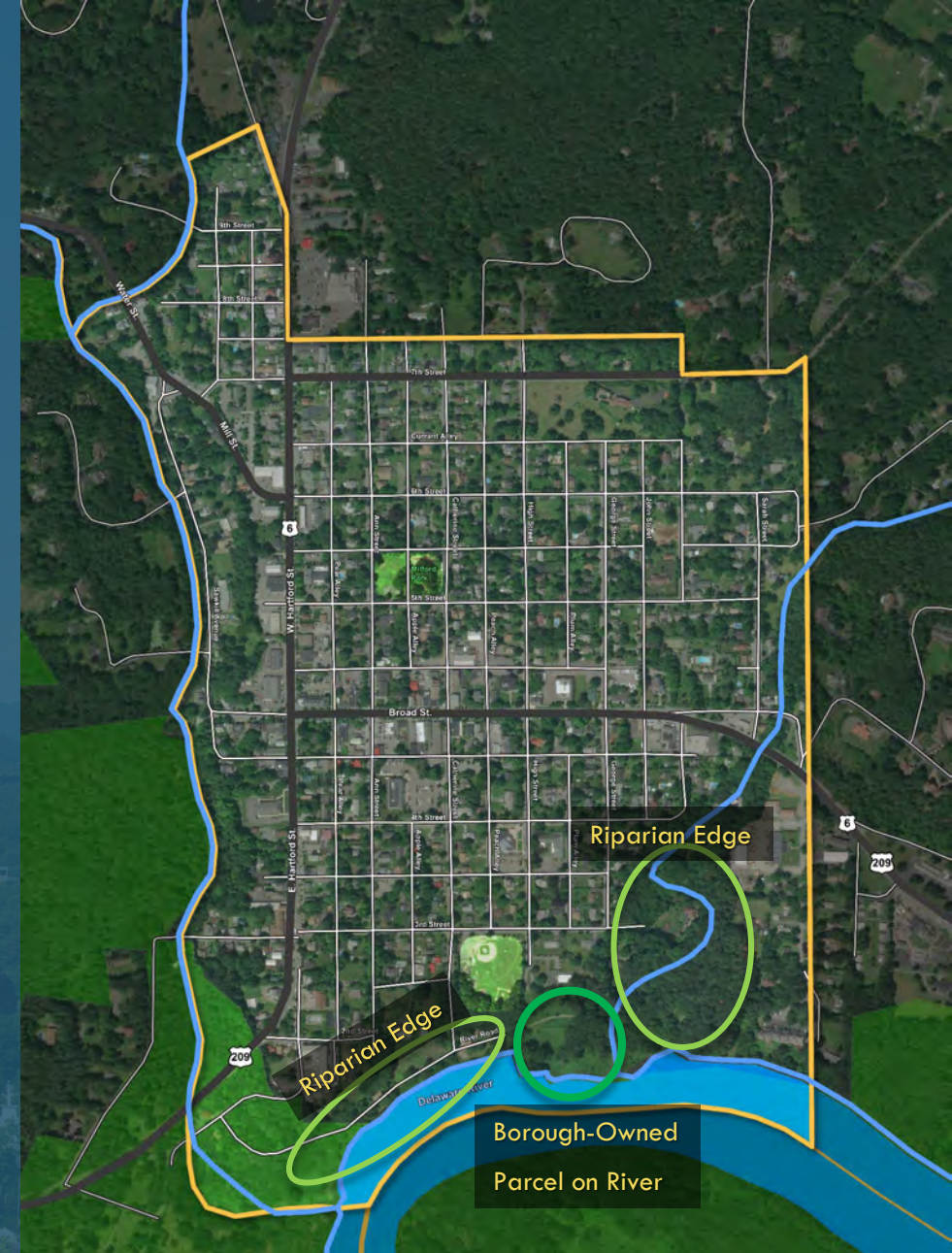
- What can improvements to downtown businesses look like to improve vibrancy of Milford?
- What are some ways to promote and expand Milford's regional commercial and cultural influence?
- How do we facilitate the increased demand for retail and service establishments?



• Delaware River & Access

Natural & Historic Resources

- *How should stormwater be managed to protect the Delaware River, and Vandermark & Sawkill Creeks?*
- *How should improvements to the Borough riverfront property occur?*
- *What would improved river access look like?*



Parks & Recreation - Municipal

Open Space & Recreation

- What improvements should take place in existing recreation areas?

Natural & Historic Resource

- Who should we partner with to help restore and renovate historic buildings, parks, sidewalks, etc.?



3rd Street Baseball Field



Milford Park

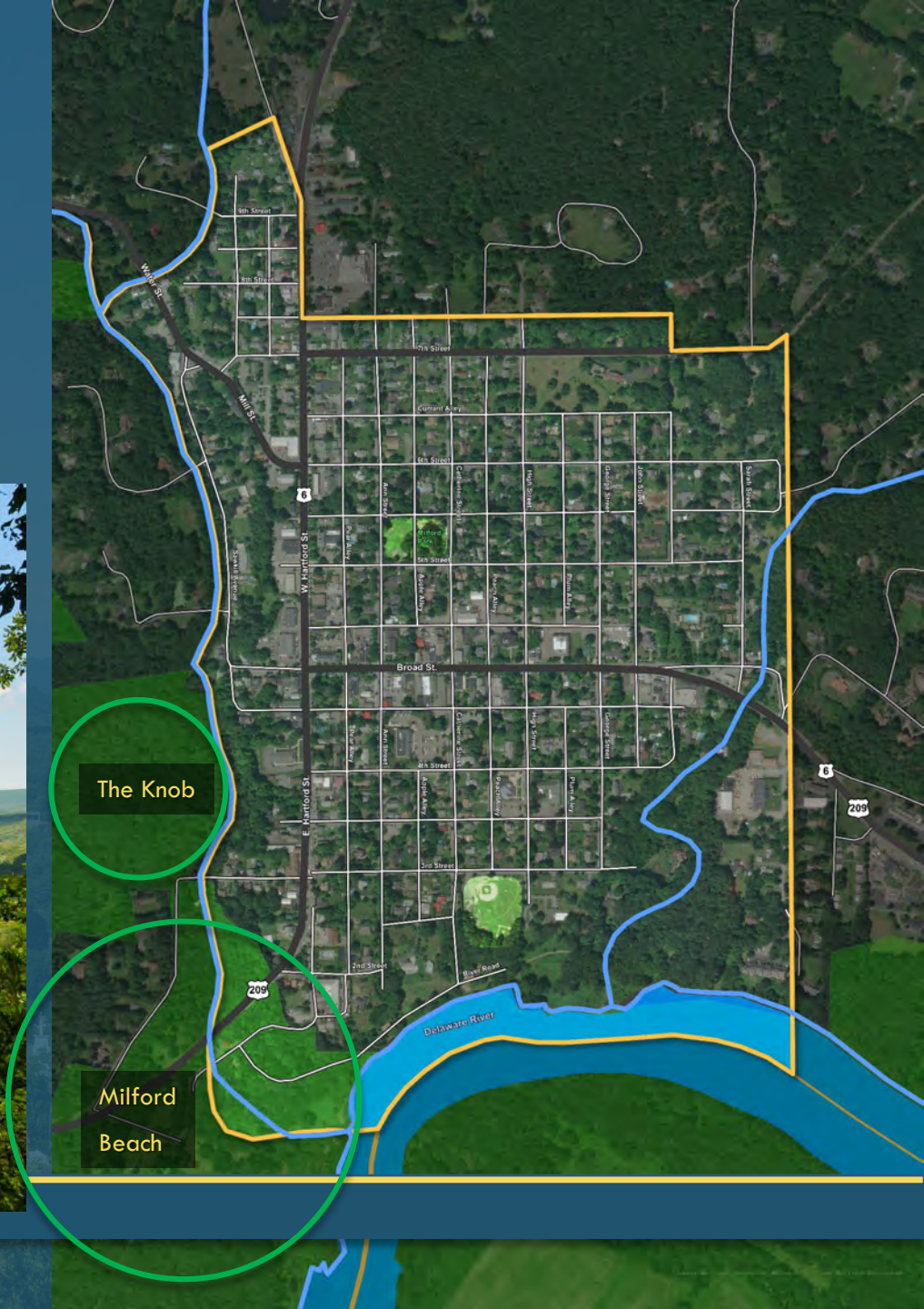
Parks & Recreation - DEWA

Open Space & Recreation

- *How can Milford proactively engage with the National Park Service as the northern DEWA gateway?*
- *How can Milford collaborate with regional municipalities to effectively negotiate with NPS at DEWA?*



The Knob



Additional Questions to Consider

Utilities

- *What is the status of the Act 537 Plan to connect the Borough to Westfall Township?*
- *What is the effect of increased density on the existing utilities?*
- *How will Borough plans to expand wastewater facilities effect business and residential development?*

Tax Structure & Budget / Revenue


- *How can the tax base in the Borough be expanded?*



Public Opinion Survey

- Please access and share the following link to take the survey
- Paper copies will be available at Borough Hall

<https://www.surveymonkey.com/r/MilfordBoroughPlan>



Milford Borough Comprehensive Plan - Update 2020

BACKGROUND INFORMATION

1. Where is your place of residence?

☐ Milford Borough
☐ Milford Township
☐ Dingman Township
☐ Westfall Township
☐ Shohola Township
☐ Matamoras Borough
☐ Other (please specify)

2. What category below includes your age?

4. If you own property in Milford Borough, is this your primary residence?

☐ Yes
☐ No

5. If you are a resident of Milford Borough, how long have you lived there?

☐ 0 to 5 years
☐ 6 to 10 years
☐ 11 to 20 years
☐ 21 to 30 years
☐ 31 to 40 years
☐ 41 to 50 years
☐ 51 or more years

6. If you are not a resident of Milford Borough, what are the primary reasons you visit? Check all that apply. (Please disregard if you are a Milford resident.)

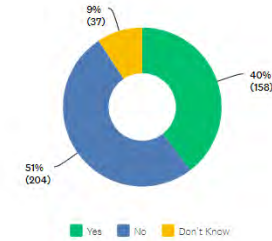
☐ Employment
☐ Shopping, dining and / or retail services
☐ Business
☐ Community services
☐ Borough Recreation, Parks, and Open Space
☐ Delaware Water Gap National Recreation Area

Milford Survey



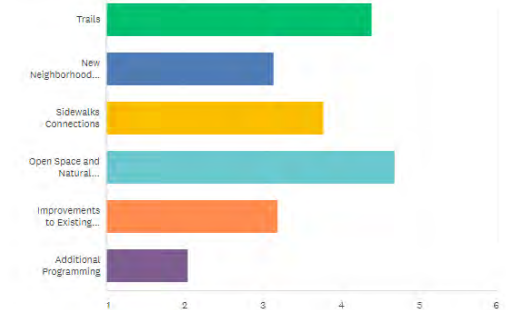
Do you feel that there are an adequate number of open space, parks, natural areas, and trails available to you in or in close proximity to where you live?

Answered: 399 Skipped: 25



With 1 being the Highest Priority and 6 the Lowest Priority :Please rank priorities that you feel Limerick Township should focus on in this plan.

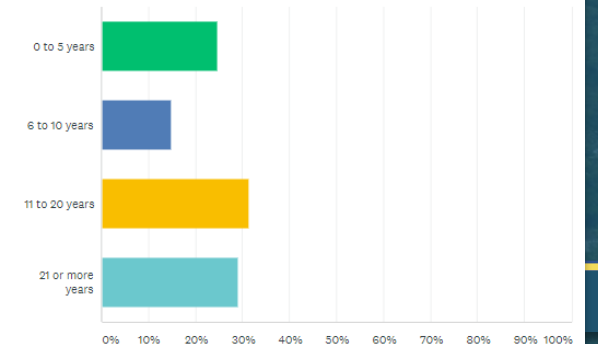
Answered: 360 Skipped: 44



Typical Survey Result Formatting

How long have you lived in your current community?

Answered: 424 Skipped: 0



Funding

Matrix – Potential Funding Sources for Comp Plan Improvements.
Begin thinking strategically about next grant application.

Organization	Program Name	Description / Uses	Due Date Annual (approx)	Max. Amount Awarded	Match Requirement	Possible Projects for Milford Borough
PA Department of Community and Economic Development (DCED)	Local Share Account (LSA) - Monroe County	LSA funds may be used for economic development, community development and public interest projects in Monroe County and contiguous counties, including Pike county	September 30	Varies based on requirements	As applicable; not required	Usually infrastructure and Community service needs. (structures, streets, schools, firetrucks, EMS, etc - possibly wayfinding)
PA Department of Community and Economic Development (DCED)	Greenways, Trails and Recreation Program (GTRP)	Projects which involve development, rehabilitation and improvements to public parks, recreation areas, greenways, trails and river conservation	July 31 2020	\$250,000 - generally 30% min less than request	15% of total project cost	Improvements at Milford Park and 3rd Street Fields; New pedestrian access to Delaware River; Improvements to Brook Hill Rd.
PA Department of Community and Economic Development (DCED)	Multimodal Transportation Fund (MTF)	Development of transportation assets, sidewalks, lighting, sidewalk enhancements, safety, connectivity and TOD (Possibly ped/transit improvements in cooperation with NPS / USFS	September 30 2020	\$3 million	30% of non-federal share of project costs	Streetscape and lighting along Broad and Harford Streets; New sidewalks in residential neighborhoods; Improved crossing at Town Square. Can fund preliminary engineering as a standalone project.
PA Department of Conservation and Natural Resources (DCNR)	Community Conservation Partnership Program (C2P2)	Park and recreation planning projects, land acquisition, development and rehabilitation of recreational facilities	Mid to late April	Small Community Development - \$30-60,000 for recreation studies and master site plans.	50% of the project cost	Master site plan for Milford Park; Acquire parcels by Delaware River; New equipment at existing parks; New landscaping at existing parks that can also address stormwater management



Funding

Matrix – Potential Funding Sources for Comp Plan Improvements.
Begin thinking strategically about next grant application.

Organization	Program Name	Description / Uses	Due Date Annual (approx)	Max. Amount Awarded	Match Requirement	Possible Projects for Milford Borough
PennDOT	Transportation Alternatives (TA) Set-Aside Program	Construction of on and off-road trail facilities for pedestrians, bicyclists and other non-motorized transportation, highway-related stormwater management	September	\$1 million	No match required - BUT, all pre-construction design, environmental clearances, permits and documentation must have been completed by the Applicant prior to application.	Streetscapes, historic structures rehabilitation, multi-use trail along River Rd. New bike lanes/signage on Borough roads; Improvements to Brook Hill Rd.
PennDOT	Multimodal Transportation Fund (MTF)	Transportation assets that enhance communities, pedestrian safety, and transit revitalization	Varies	\$3 million	30% of amount awarded	Streetscape and lighting along Broad and Harford Streets; New sidewalks in residential neighborhoods; Multi-use trail along River Rd.; Improve damaged intersection, crosswalks
Pennsylvania Environmental Council (PEC)	Pocono Forests and Waters Conservation Landscape Conservation Assistance Grant	Identify natural landscapes for protection, create greenway and trail connections to public lands, community engagement	Early Spring (annually)	\$10,000	1:1 local match (match cannot be DCNR funds)	Design Wayfaring system, improve water trail access, Multi-use trail along River Rd., draft conservation zoning

Discussion & Brainstorming Session

GOALS

Goals for the project — initially broad, then specific

FACTS

Facts - Vibrant downtown, trails, walkable areas, river access.

CONCEPTS

Ideas for attaining project goals – Opportunities for improvement

PARTNERS

Partners - Groups, Businesses, Institutions to create a partnership with

Discussion & Brainstorming Session

<u>GOALS</u>	<u>FACTS</u>	<u>CONCEPTS</u>	<u>PARTNERS</u>
PROTECT HISTORIC RESOURCES	HISTORIC CHARACTER	RIVERFRONT PARK & TRAILS	PIKE COUNTY
CONNECT TO THE RIVER	CULTURAL FESTIVALS & EVENTS	CREATE A 'TOWN SQUARE'	NATIONAL PARK SERVICE
IMPROVE SAFETY FOR PEDESTRIANS & BICYCLES	REGIONAL HIGHWAY ACCESS	REVITALIZE TOM QUICK INN	LOCAL BUSINESSES

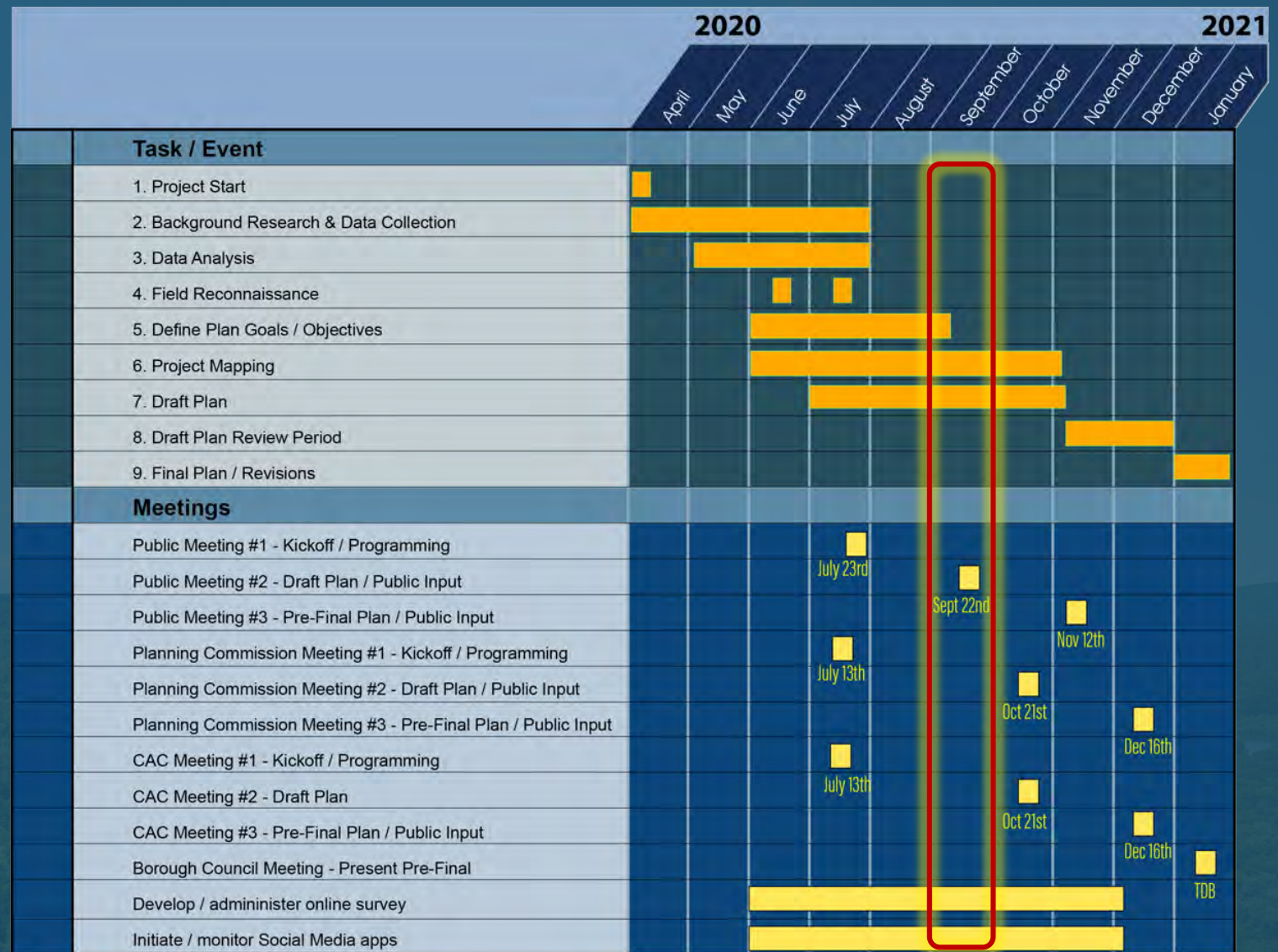
Next Steps

- Community to Complete & Share Public Opinion Survey
- Simone Collins to Continue : Data Gathering, Mapping & Preliminary Analysis
- **Public Meeting #2 – Tuesday September 22, 2020**



Project Schedule

- Public Meeting #2 –
September 22, 2020



Survey Link: <https://www.surveymonkey.com/r/MilfordBoroughPlan>